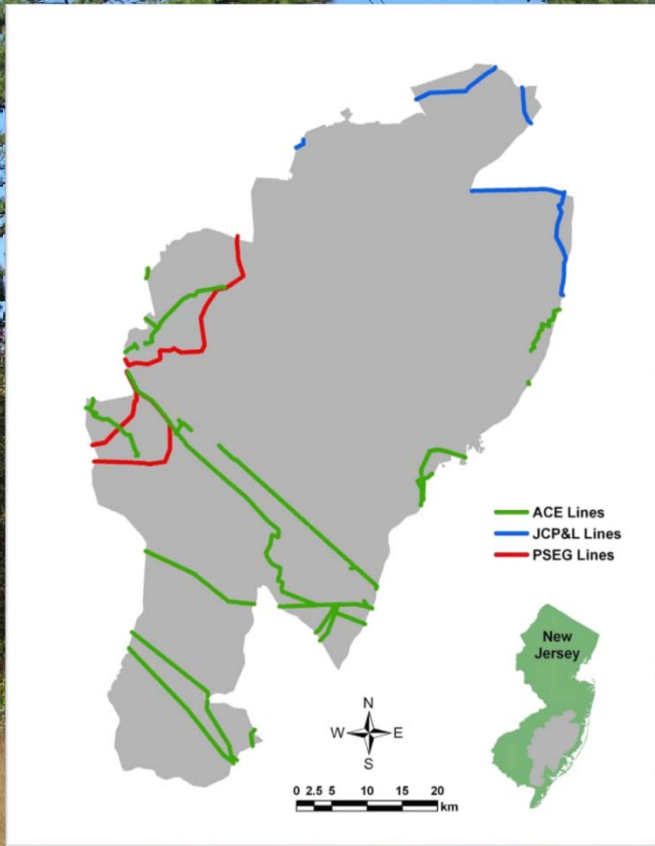


An Overview of the New Jersey Pinelands Electric-Transmission Right-of-Way Vegetation Management Plan and CMP Pilot Program



Jean Montgomerie
Environmental Specialist
Pinelands Commission

Approval:

The Commission approves the New Jersey Pinelands Electric Transmission Right-of-Way Vegetation Plan (ROW Plan) in 2009.

Purpose:

- Maintain early successional habitats
- Preserve wetlands integrity
- Maintain utility transmission line safety

Extent:

Manage 233 miles of high voltage ROW in the Pinelands Area.

**NEW JERSEY PINELANDS
ELECTRIC-TRANSMISSION RIGHT-OF-WAY
VEGETATION-MANAGEMENT PLAN**



MARCH 2009

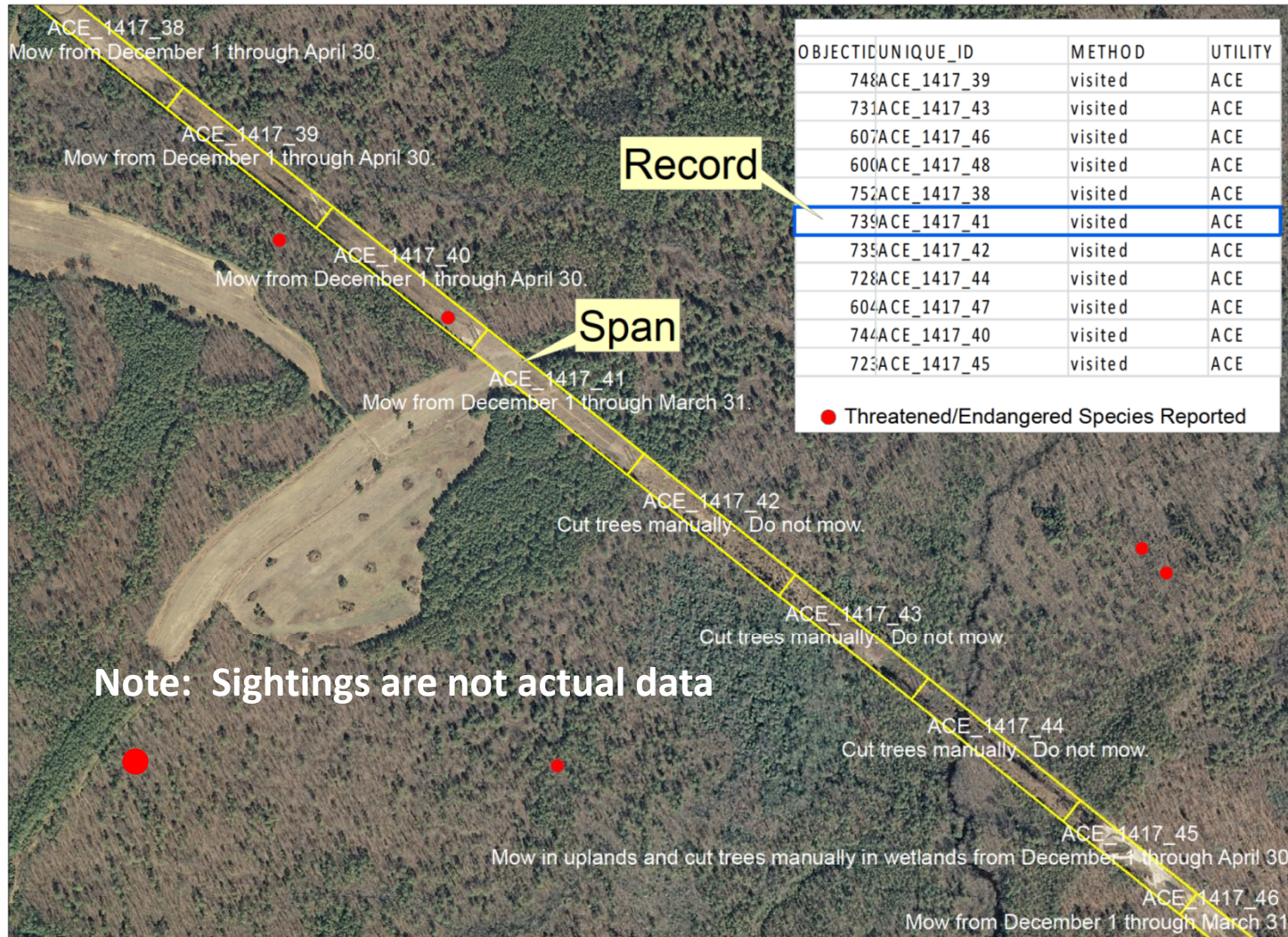
ROW Pilot Program Timeline

- 2009: ROW Plan approved as a 10-year Pilot Program in the CMP.
- 2010: Companies begin annual reporting on which spans were managed.
- 2014: Staff provided the First Progress Report on years 2010-2012 to Commission.
- 2017: Staff provided the Second Progress Report on years 2013-2015 to Commission.
- **2019: “Commission Executive Director must review Pilot Program and determine whether or not the Program has been successful and may be incorporated into CMP.”**
- **“Or two-year extension”**

The Vegetation Management Prescriptions



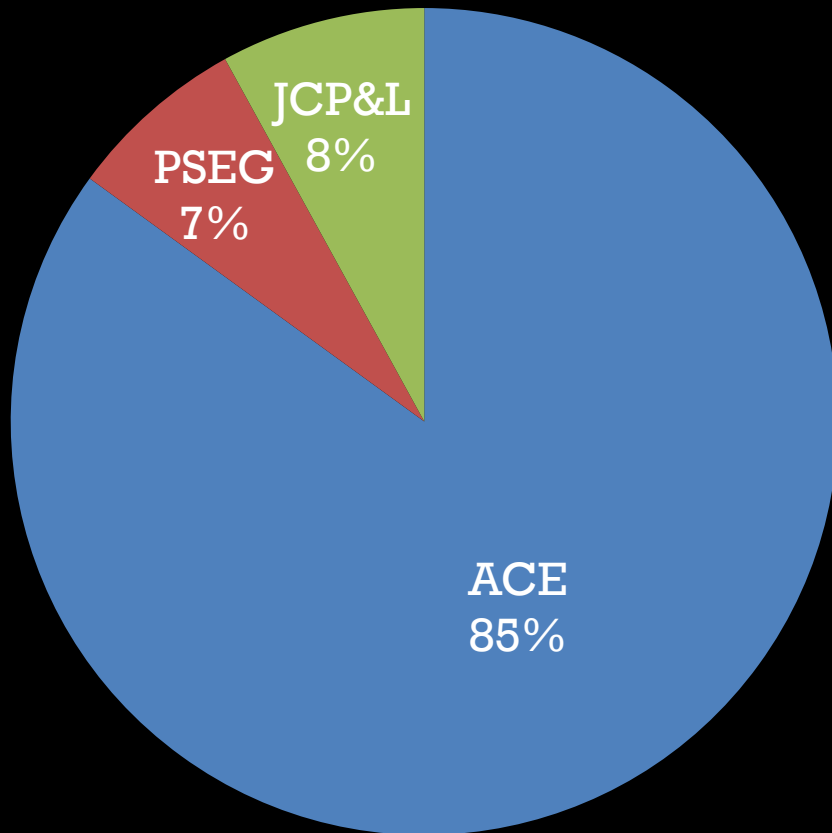
- Developed by Rutgers University and Pinelands Commission Science staff to maintain Pinelands successional habitats
- Are on a span-by-span basis for all 3,041 spans in the Pinelands
- Prescriptions reflect local Pinelands habitats such as scrub-shrub vegetation, emergent wetlands, ponds and grasslands
- 59 prescriptions were developed, the basic prescriptions are “mow” and “cut trees manually, do not mow,” with various additional restrictions added, such as a timing restriction



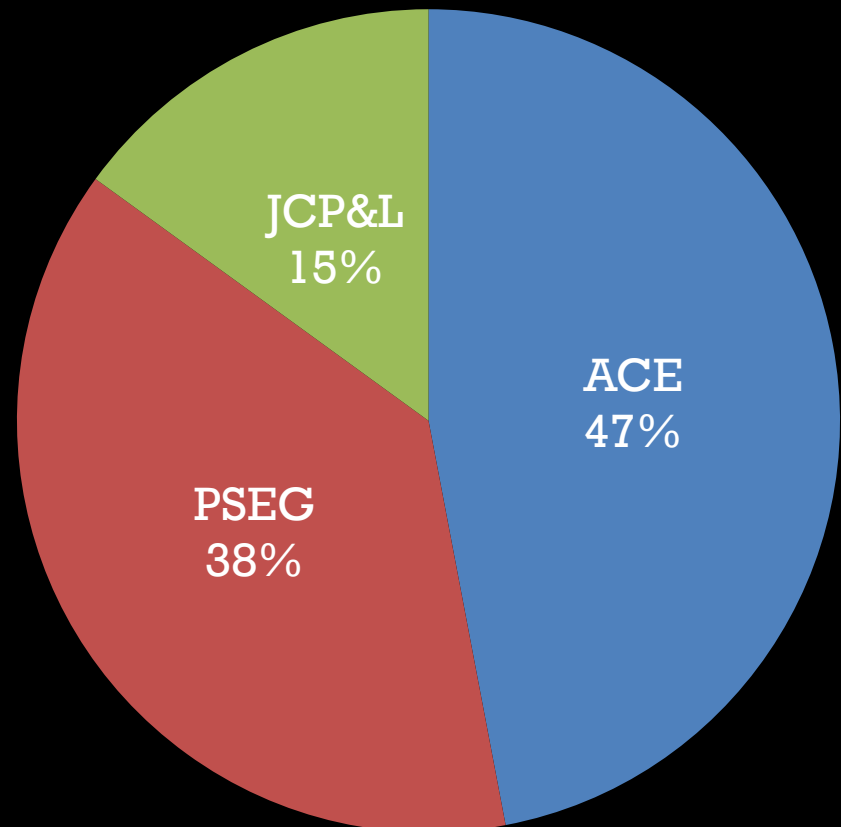
Spreadsheet integration with Arcview mapping

The Three Utility Companies

No. of Spans (3,041)



Area of ROW (2,695 acres)





Wetlands spans on a JCP&L line in Berkeley Township

Administered by Two Offices

Regulatory Programs Office



Site inspects ROWs to see if prescriptions are being carried out correctly.

Science Office



Reports on vegetation study plots to assess the effects of the prescription.

**The Pilot Program
was generally
successful in
meeting its goals ...**

**... but we need more time to
adopt an Amended ROW
Plan that addresses issues
encountered over the past
ten years.**

**A two-year extension will
allow the development of
the Plan.**





Since 2012, all three utilities have been requesting the use of IVM (Integrated Vegetation Management), including limited herbicide use, to better manage tree regrowth.



Questions?